

COMMON BOND

Edition 18 - Winter 2001

ONTO A WINNER (OR THREE) EXCELLENT PERFORMANCE IN THE 2001 BRICK AWARDS

At the 2001 BDA Brick Awards Dinner on 14 November, BBC's Steve Ryder announced that the winners of the Best Refurbishment, Best Craftsmanship and Best Export Awards all featured bricks from Ibstock.

These winning projects represent the *crème de la crème* of recent brick construction and illustrate the marvellous results possible through the partnership of designers, builders and brick maker.

The Best Refurbishment Award went to the Cruciform Project at University College, London. Designed by HLM Architects, with Jarvis Construction the main contractor, it impressed the judges with 'its attention to detail'. Some 200,000 bricks, including purpose-designed specials were made to replace lost pieces of façade and to enhance previous alterations. Our Leicester factory specially developed bricks to match the colour and texture of the original Victorian fabric.

The Best Craftsmanship Award went to a superb private garden in Sussex and produced tumultuous applause for its designer/ bricklayer Nick Evans who spent four years on the work. The judges had praise for the wide variety of aesthetic and structural challenges tackled and for its consistent build quality. Demonstrating virtually every type of feature within its buildings and structures. It is a virtuoso example of the bricklayers craft.

A million Ibstock bricks, including 100,000 specials, together with our CAD assistance went into the work. Chailey and Hamsey Stocks were used for the main walling with detailing largely in Swanage Handmade.

Prominent among the many features are two Tudor-style walled gardens. In one, a seven-bay loggia, its 'pineapple' piers supporting barrel-vaulted brick ceilings, is a particularly fine structure. Externally it features diaperwork in grey-glazed headers, label coursing and Tudor Rose feature bricks. Massive retaining walls, 3 metres high and 1.34 metres (six-bricks) thick at its base are sectionally-bonded and topped with half-round copings. Including Laybrook bricks, some 140,000 bricks went into the wall alone.

The castellated 18" -thick walls of the Orangery pavilion are built in English-bonded brickwork topped with double cant cappings, and with arcades of semi-circular gauged arches. Arches here are topped with dentilation and label coursing with cyma rectas.

Best Export Award went to the Kosei Shoken Head Office in Japan. This, the largest brick building in Tokyo was designed by Architects, Nagata and Kitano. The judges felt that the textured effect of the façades demonstrated the wide potential of brickwork cladding. And it's earthquake-proof!

Some 350,000 Bradgate Harvest Antique bricks from Leicester were used to create a detailed façade on the reinforced concrete-framed building. By cutting the bricks to various thicknesses, detailed relief patterns were created in the brickwork, generating constantly changing shadow effects during the course of the day. In addition, arch and quoin details were created using special shaped bricks.

So impressed were the clients that they have asked the design team, in conjunction with Ibstock Brick, to build their new office in Osaka.

The shortlist: five other projects using Ibstock bricks were shortlisted. These were: the Bristol Royal Hospital for Children (Best Public Building category); King's House, Brighton (Best Refurbishment category); Eddington House, Bishops Sutton, Hampshire and Thannington Pumping Station Retail Development, Canterbury (both Best Craftsmanship category), and Horome Triton Square, Tokyo (Best Export category).

Best Craftsmanship - Nick Evans



Best Refurbishment - The Cruciform Project (HLM Architects/Jarvis Construction)



Best Export - Kosei Shoken Head Office, Tokyo (right)



New Products

IVANHOE'S SELF-BUILD APPEAL IS SELF-EVIDENT

Ivanhoe Burnt Red is a deep red, soft-sanded simulated hand-made brick created with the aspirations of discerning self-builders in mind. Its distinctive aesthetic sets it apart from other moulded products.

The soft yet rustic texture and format create brickwork with a mellow, aged appearance. Together with the frost-resistant (FL) specification, the self-builder can be confident of having made a wise technical choice too. And for those distinguishing details? Purpose-made and cut & bond specials, naturally.

The first of an exciting new range from Leicester, the Ivanhoe Burnt Red should find a particular welcome in Yorkshire and Eastern counties, the South East and South of England.

For samples or further information contact your local Sales Office
(0870 903 4008)
or your Ibstock Brick representative



Ivanhoe Burnt Red

NEW SHOWROOM, NEW IDEAS AT JEWSON

A technical presentation for architects and contractors to launch the Ibstock Tile Brick and Universal Joint was held at the new brick showroom at Jewson's Hereford branch last summer.

As well as featuring these latest innovations, the showroom displays over 60 of our most popular bricks.



BIG WHEELS KEEP ON TURNING



This Ibstock-sponsored team raised £2,500 for their efforts in the Dordogne Challenge Cycle Ride, which is on target to raise an impressive £170,000 for charity.

The lads clocked up an impressive 18mph average during the three-day, 530 mile event.

They are (L-R) Ray Johnson, Brian Cooper, John Renshaw and Steve Bond. Ibstock are hoping to enter again in 2002.

Appointments

■ **Andrew Halstead-Smith** joined Ibstock Brick as **Marketing Manager** in January 2002.

In addition to a marketing-focused MBA, Andrew went on to gain Chartered Marketeer status. He has a wealth of industry-relevant experience: virtually all his career has been with blue-chip construction materials companies, including Redland, Lafarge, Caradon and British Gypsum.

That's the past. As for the future, Andrew is 'looking forward to the opportunities and challenges of working with 'the best name in the brick business.'



■ **Kevin McCarthy** commences 2 year secondment as new **General Manager** at **Hatherware**.

Previously, Kevin was Major Accounts Manager – Builders Merchants, with additional responsibility for brick exports to Ireland. While maintaining the Irish connection, Kevin will devote most of his time to Hatherware's terracotta, faience and glazed brick business.

Kevin has worked within the construction industry for 24 years. He rejoined Ibstock three years ago.



■ **Customer Service Appointments**

Two appointments reflect the priority we put on Customer Service at Ibstock and developing structures and ways of working that meet customers' changing needs.

Sue Goodwin is now **Customer Services Manager** responsible for our eight sales offices, to ensure that every individual office delivers the best service possible. Sue was formerly Lodge Lane Sales Office Manager.

Martin Nalty is **Commercial Operations Manager** with the key responsibilities of pricing, procedures and the OneWorld computer system.

Pictured are Martin (5th from L) and Sue (5th from R) with their team of Sales Office Managers.



■ **Alexis Harrison** joined Ibstock in early December as **South East Design Advisor**, based at our Laybrook Works. Alexis studied Interior Architecture at the University of Brighton and was a freelance designer before joining Ibstock.



New Literature

LOOK NORTH

The Northern Selection is a new brochure covering bricks sold via merchants in Wales and Northern England and is specially produced for builders merchants to assist 'sell-through' to their customers. Simple and jargon-free, this very useful point-of-sale brochure is designed with an eye to the needs of small builders, tradesmen, self-builders and DIY enthusiasts. It helps selection while encouraging users towards more ambitious use of brick.

It gives better targeting by confining selection to area-appropriate products, helping to build on existing sales. It then goes one better, encouraging sales of added value products such as special shapes by detailing individual brick-built features to enhance a home or garden. All these features combine in a full-colour house picture on the back cover.

To obtain copies, call the Literature Hotline on 0870 903 4030.

HATHERNWARE GLAZED BRICKS

Glazed bricks now form part of the Hathernware portfolio, complementing their terracotta and faience products. The range of standard colours is comprehensive, but bespoke colours can be made on request.

Glazed bricks can be used in projects from housing through to public buildings.

For details contact your nearest Sales Office on 0870 903 4000.

RANGE UPDATE

Since August 2000 we have launched 36 new products. These appear in the latest Range Update supplement - for use in conjunction with the main August 2000 Ibstock Range brochure.

As ever, we demanded the highest photography and reproduction standards to show colours and textures as faithfully as print will permit.

Another innovation - a user-friendly guide to withdrawn products. These are all listed with suggested alternatives for each, referencing the pages where these options appear.

For an up-to-the-minute view of our latest offerings, the Range Update is essential reading.

To obtain copies, call the Literature Hotline on 0870 903 4030.



ALDERLEYS HAVE THE EDGE



The new Alderley Range bricks from Chesterton in North Staffordshire are smart wirecuts in more ways than one. They look good and they can save time. How come?

Low water absorption bricks do not extract water from mortar as fast as some other types, a factor which can produce the 'floating brick' phenomenon and prolong build times in colder, wetter weather. We have developed Alderley bricks with a higher absorption specification to improve suction to assist bricklayers and project managers to avoid this type of delay and meet their progress targets.

- **Alderley Mixture** - a subtle blend of khaki, red and orange
- **Alderley Orange** - a plain orange
- **Alderley Burgundy** - a multicoloured with purple, deep red and orange hues

The sanded surface texture is reminiscent of that of stock bricks. Special shapes are available in purpose-made or cut & bond formats. The range is FL designated, making it suitable for use anywhere in the UK although we expect it will have greatest appeal to developers in the West Midlands and North West of England.



Alderley Mixture



Alderley Orange



Alderley Burgundy

For samples or further information contact your local Sales Office (0870 903 4007) or your Ibstock Brick representative.

Brickwork Good Practice Seminar



Pictured: Andy Batterham

Late 2001 saw the publication of new Codes of Practice BS8000 Part 3, Workmanship on Building Sites Code of Practice for Masonry, and BS5628, Part 3, Code of Practice for Use of Masonry, Materials and Components, Design and Workmanship, effective from 15th October 2001.

In the first technical seminar related to the changes, Western Design Advisor, Andy Batterham, presented to 70 architects, contractors and engineers in Jersey on 'Brickwork Good Practice'

For details of these and other technical seminars contact the Design Advice Hotline on:

(0870 903 4018)

BERKSHIRE ORANGE STOCK a bright future beckons



New-build or refurbishment project in London or the South East? Take note. The Berkshire Orange Stock, new from Laybrook, is right in line with the trend towards lighter-coloured red bricks.

It's in line with regional traditions too, as bright plain orange bricks feature in the building vernaculars of Hampshire, Essex and Bucks. Berkshire, too, of course. But unlike the oranges of old, which were sometimes underfired and liable to frost-failure, these are FL designated, therefore frost-resistant and suitable for use in normal locations and degrees of exposure.

The Berkshire Orange Stock is suitable for main and detail brickwork, either in contrast with other bricks or alongside traditional materials such as flint. It is ideal for arches and a range of special shapes is available in purpose-made or cut & bond format.



Berkshire Orange Stock

For samples or further information contact your local Sales Office
(0870 903 4012)

or your Ibstock Brick representative.

FIVE-A-SIDE FOOTBALL

Last October a team of Architects from the Urban Design Services Department at Birmingham City Council were the victors of Ibstock's Five-A-Side Tournament.

The event, held in conjunction with Taylor Maxwell at Aston Villa Leisure Centre, attracted 14 teams from major architectural practices in the West Midlands. It was a tough competition with every player working hard, but Urban Design (pictured, including a substitute) were consistent performers throughout and deserved their win.



IBSTOCK
BRICK

Chesterton Hosts NHBC Awards

Given the important role that bricks play in housing, a brick factory seems a good choice to host housebuilding awards and last October our Chesterton works in North Staffordshire was the venue for the Northern NHBC Awards presentation.

Site personnel from McAlpine Homes, Fairclough Homes and Persimmon Homes received awards from NHBC executives. The day also included a company and technical presentations followed by a tour of production and cut & bond specials.



Pictured are (L-R) Rob Wilcox, Craig Shaughnessy and Chris Battersby with their NHBC Accreditation certificates.



Pictured are main group with North West Divisional Sales Manager John Carney (far right) and North West Design Advisor Andrea Cooley (front 2nd left).

Setting out on-line

Set out a brick wall to the nearest half-brick and you can save money by not wasting time and materials in cutting bricks. With this in mind we have improved the Ibstock web site to include a brick quantity and setting out calculator. This on-line facility can help customers achieve the most economic design approach. It's fast, friendly and flexible. What's more it's first. Yet again - another Ibstock Innovation.

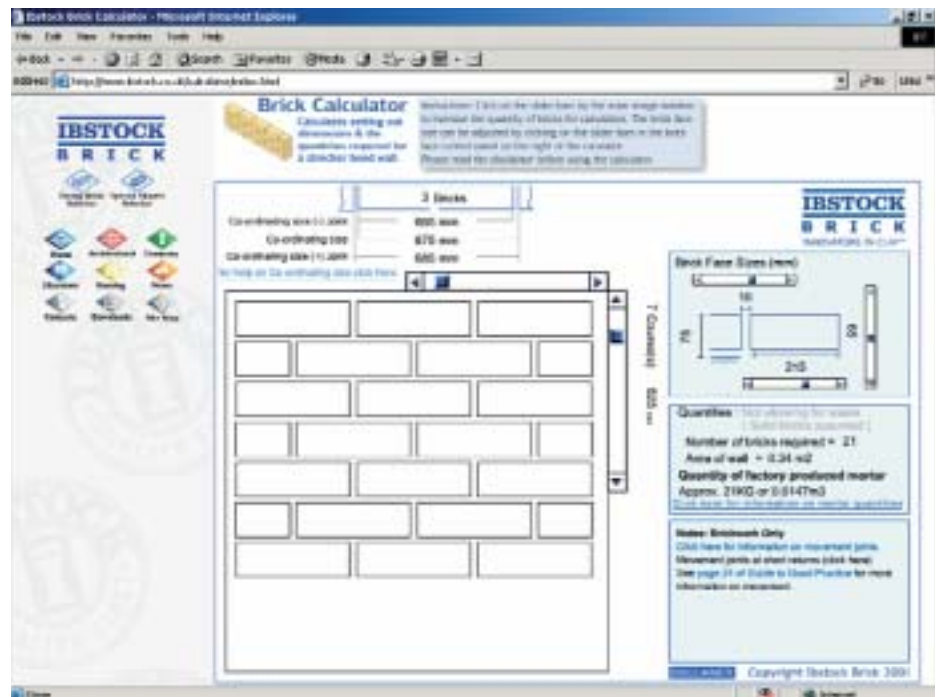
It's an interactive visual calculator that allows the user to build the wall on-screen and get immediate feedback as to the setting-out size and the number of bricks needed. And that's not all. It also shows how many bricks per square metre and the quantities of factory-produced mortar needed to build the wall. It can handle standard and large format bricks, so imperial bricks for refurbishment work are no problem.

Beyond stretcher bond

Additional bond options can be chosen when Phase 2 becomes operational in February.

Here's where to find it

.....www.ibstock.co.uk/calc



Local appeal from Stourbridge

New Products



Holbeach Red



Holbeach Antique

Good news from Stourbridge for customers in the Midlands! They now make a local equivalent to the popular Brunswick products from Cattybrook. Good looks and high quality combine with lower transport costs to make these new wirecuts an attractive proposition for housebuilders and other specifiers.

- **Holbeach Red** is a plain red textured brick similar to Brunswick Red
- **Holbeach Antique** is inspired by Brunswick Farmhouse, with its rustic and mellow blend of orange through khaki to red

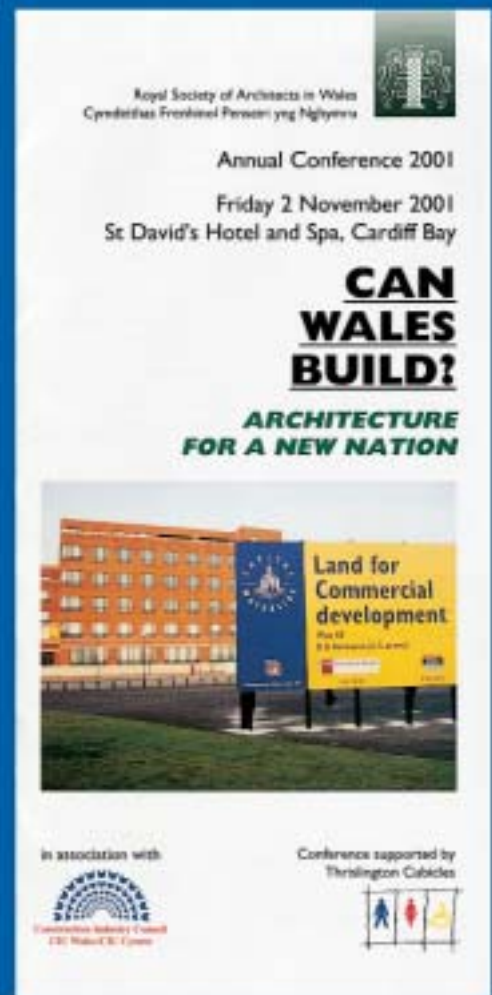
A high technical specification including FL designations and special shapes are all part of the Holbeach package.

For samples or further information contact your local Sales Office
(0870 903 4006)
 or your Ibstock Brick representative

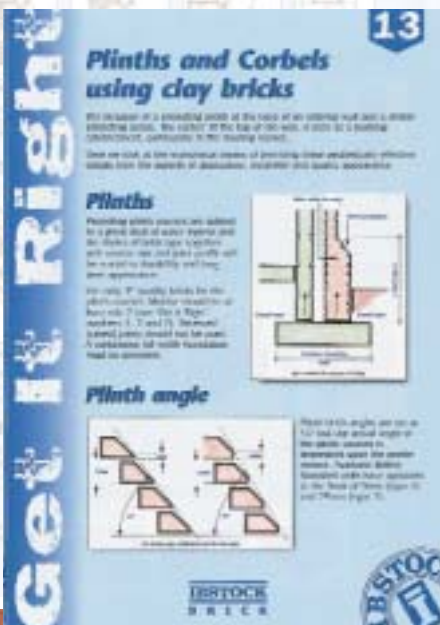
Once more to Wales

Last November Ibstock once more demonstrated its commitment to architects by supporting the annual conference and exhibition of the Royal Society of Architects in Wales.

The event at Cardiff Bay drew over 90 architects and after the conference dinner, Malcolm Parry, Head of the Welsh School of Architecture, interviewed RIBA President Paul Hyett, on his choice of 'Desert Island Buildings'.



Lucky 13



Plinths and Corbels using clay bricks is number 13 in the Ibstock Get-it-Right series for builders merchants' trade counters.

As well as covering the use of special shapes and bonding to create these value-enhancing details, the handy, pocket-size leaflet also packs in guidance on sills, dentils and eave and verge junctions.

The series, from our Design Advisory team, offers guidance on many aspects of brickwork and clay paving. It demonstrates our commitment to good design and site practice and our practical support to merchants' end-user customers. The series has been a hit with builders.

For copies, call the Literature Hotline on 0870 903 4030 or make a site visit to www.ibstock.co.uk

Creative Fire

Situated in the grounds of Birmingham's King Edward High School for Girls, this brick sculpture by artist Gwen Heeney was made with the help of our Stourbridge factory. Unfired bricks were donated to the school, where they were carved before being fired in the Stourbridge specials kiln. The fired bricks were then built into the sculpture's final form.



The Weathered Look From Ravenhead

Attractive colour and rumbled texture are combined in an exciting new brick from our Ravenhead factory in the North West. Enter the Lancashire Weathered.

Developed in consultation with our customers, it's bound to mean business in the higher-value housing and self-build markets of the North West and Midlands.

The reclaimed-type appearance lends itself to blending with adjacent buildings -

particularly important on brownfield and infill sites. But it has the guaranteed FL frost-resistance you'd expect of a modern brick and they can be teamed with complementary special shapes.

For samples or further information contact your local Sales Office (0870 903 4007) or your Istock Brick representative.



Lancashire Weathered

RIBA West Midlands Awards



Annual Regional Event @ Think Tank, Millennium Point, Birmingham - Thursday 15th November 2001



Istock was a co-sponsor of the RIBA Awards 2001 West Midlands in November.

The chance to see this celebration of architecture at the unusual venue of the 'Think Tank' at Birmingham's Millennium Point, attracted over 400 architects, contractors and clients.

Architect Sir Nicholas Grimshaw did the honours, presenting award certificates to the teams behind the four winning projects.

ARUP



eisenware:wahn

IBSTOCK
BRICK

KONE



m Mott
MacDonald

WILA

IBSTOCK
BRICK

IBSTOCK
B R I C K

Arch Assemblies for the house builder

Ibstock Brick manufactures a wide range of lightweight arch assemblies suitable for both window and opening details.

Arches can be supplied as Lightweight Arches, constructed from brickslips, bonded onto lightweight aggregate block giving an arch that is both strong and robust yet light enough to handle easily on site and, most importantly, gives the exact appearance of a standard-made arch.

Alternatively your arch requirements can be supplied as individual brick units or as bonded brick sections.



Easy Arch



Skewback
or Flat Arch



Segmental Arch

INNOVATORS IN CLAY™

For more details contact:

Design Advice Hotline Ibstock Brick Local Sales Office
0870 903 4018 **0870 903 4000**



IBSTOCK
B R I C K